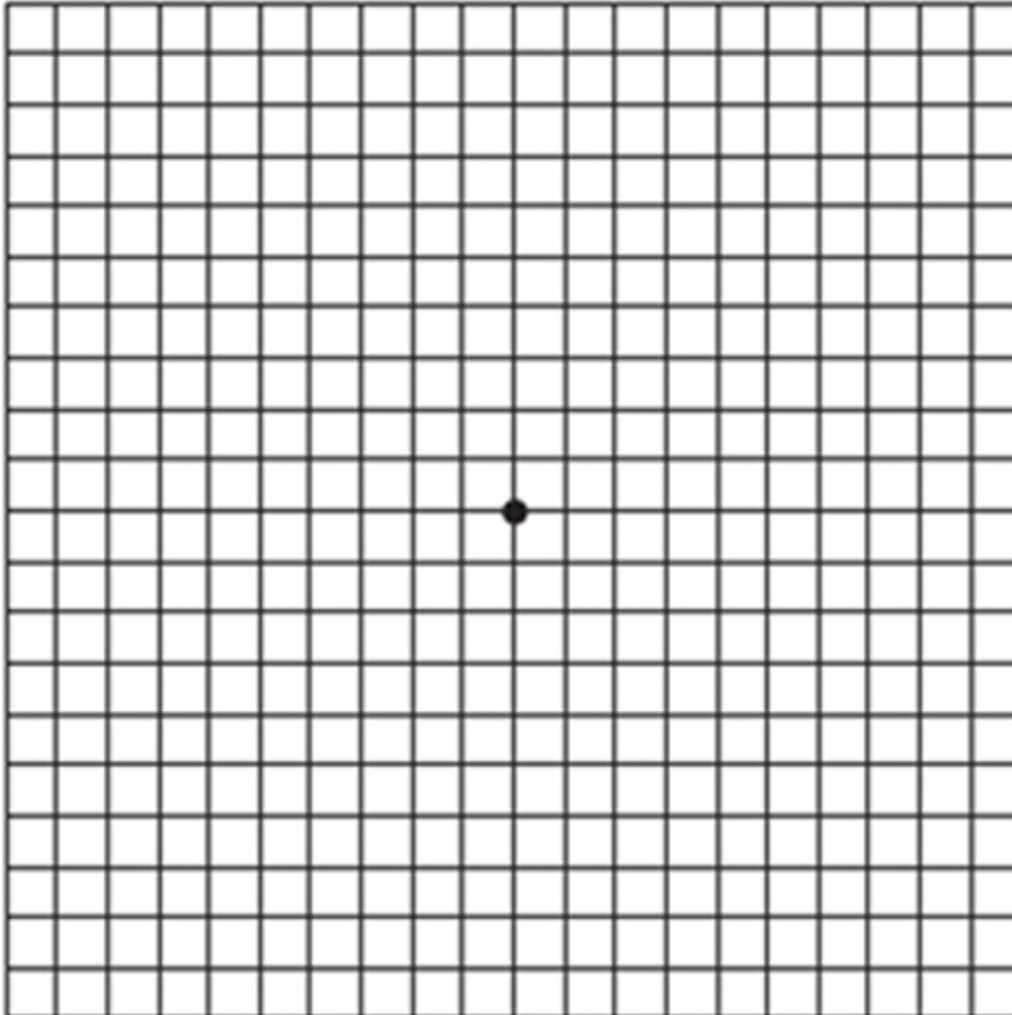




J. Clay Bigham, O.D. Jeffrey D. Irvin, O.D. Heather R. Mann, O.D.

634 Cross Valley Circle Evansville, IN 47710
812-401-7777
www.northside-eyecare.com



AMSLER GRID INSTRUCTIONS

- Hold the grid securely or place on flat surface about 12 inches away.
- Wear glasses during testing, look through bifocal if needed for near.
- Cover one eye (each eye needs to be tested separately)
- Look at the center black dot for the entire test.
- While looking at the center dot, ask yourself:
 - Can I see all four corners of the large square?
 - Are any of the small squares or lines wavy, distorted, or missing?
- Repeat for your other eye.
- If you notice any changes in the appearance of the grid, please notify our office immediately.

- The test should be performed _____.